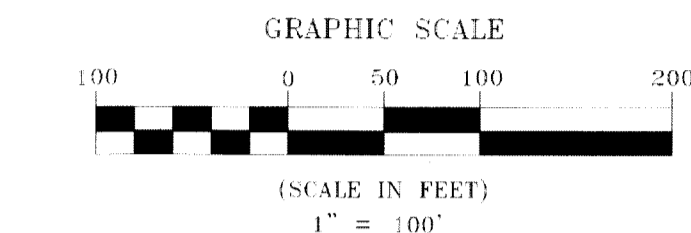
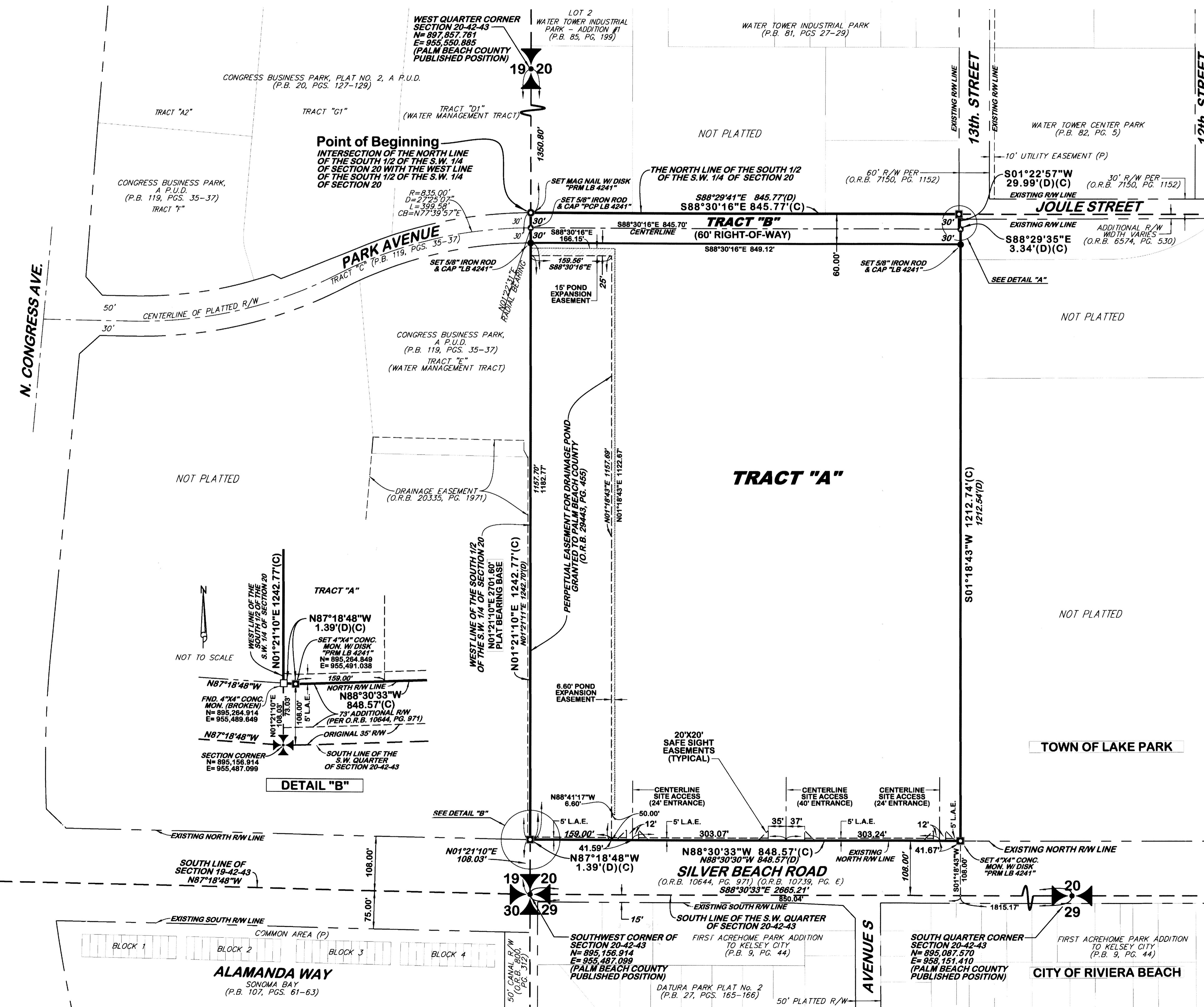


SILVER BEACH INDUSTRIAL

A PORTION OF SECTION 20, TOWNSHIP 42 SOUTH, RANGE 43 EAST,
TOWN OF LAKE PARK, PALM BEACH COUNTY, FLORIDA

FEBRUARY 2021

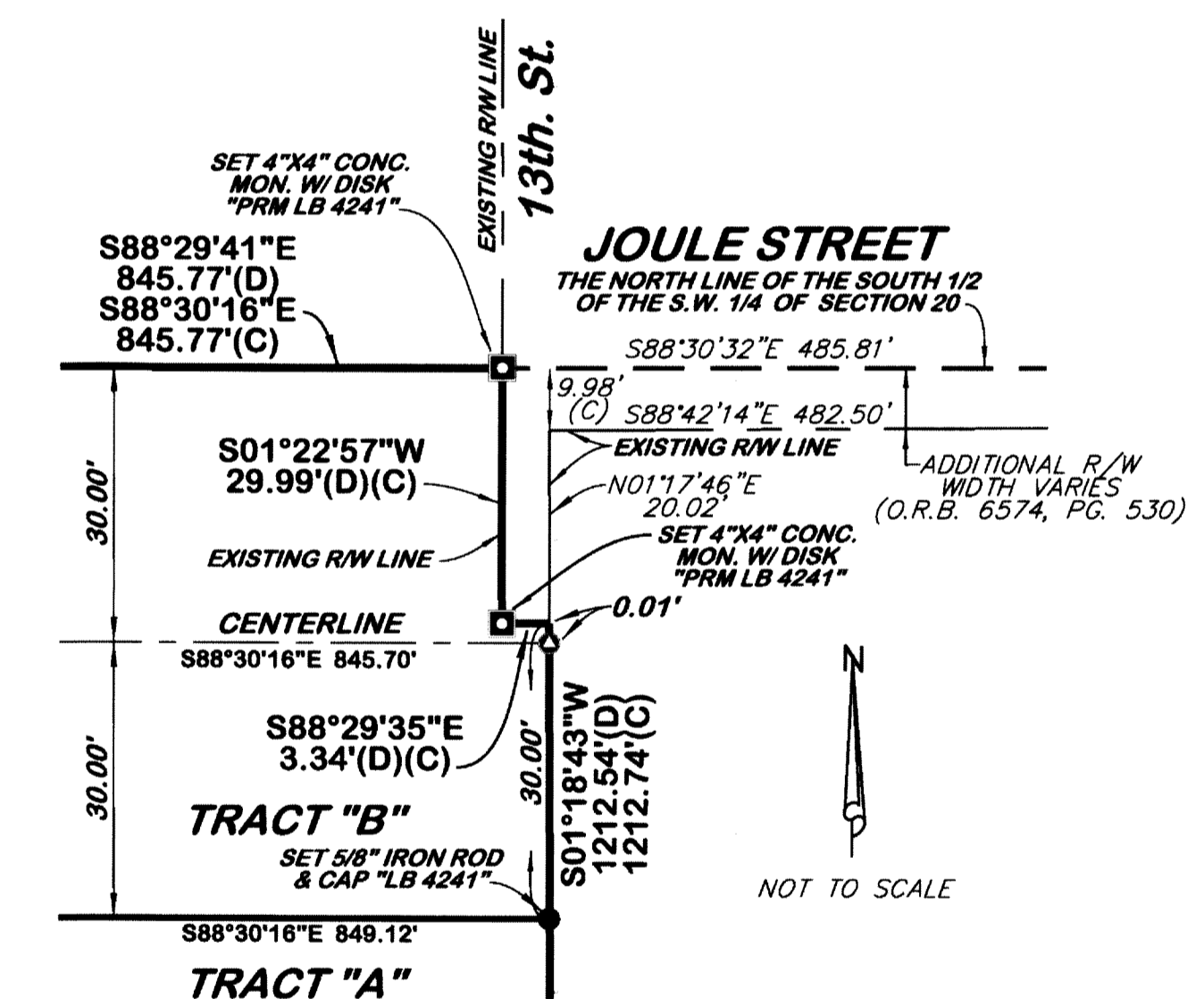
164



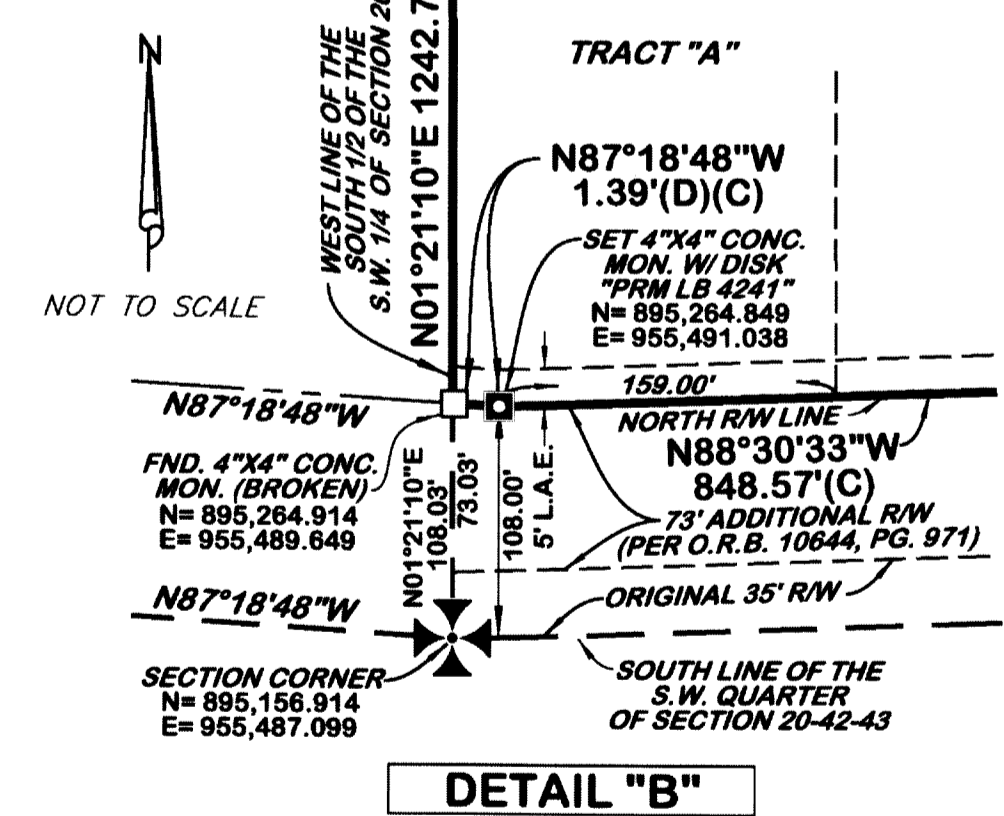
SHEET 2 OF 2

ABBREVIATIONS:

- (C) = CALCULATED
- (D) = AS SHOWN ON DEED
- (P) = AS SHOWN ON PLAT
- C.B. = CURVE'S CHORD BEARING
- D = CURVE'S DELTA ANGLE
- D.B. = DEED BOOK
- FND. = FOUND
- L. = CURVE'S ARC LENGTH
- L.A.E. = LIMITED ACCESS EASEMENT
- LB = LICENSED SURVEY BUSINESS
- MON. = MONUMENT
- O.R.B. = OFFICIAL RECORD BOOK
- P.B. = PLAT BOOK
- PG. = PAGE
- PGS. = PAGES
- PRM = PERMANENT REFERENCE MONUMENT
- R = CURVE'S RADIUS
- R/W = RIGHT OF WAY
- S.U.A. = SEACOAST UTILITY AUTHORITY
- W/ = WITH



DETAIL "A"



DETAIL "B"

AREA TABULATION		
DESCRIPTION	SQUARE FEET	ACREAGE
TRACT A	1,004,800	23.067
TRACT B	50,846	1.167
TOTAL	1,055,646	24.234

MAP SHEET

F.R.S. & ASSOCIATES, INC.
LAND SURVEYORS AND LAND PLANNERS
 CERTIFICATE OF AUTHORIZATION NO. LB 4241
 2257 VISTA PARKWAY, SUITE 4
 WEST PALM BEACH, FLORIDA 33411
 PHONE (561) 478-7178
 Web Site: www.frssurvey.com